



548032H

**INOSYS LBS**

PV / DC switches – 100 to 630 A

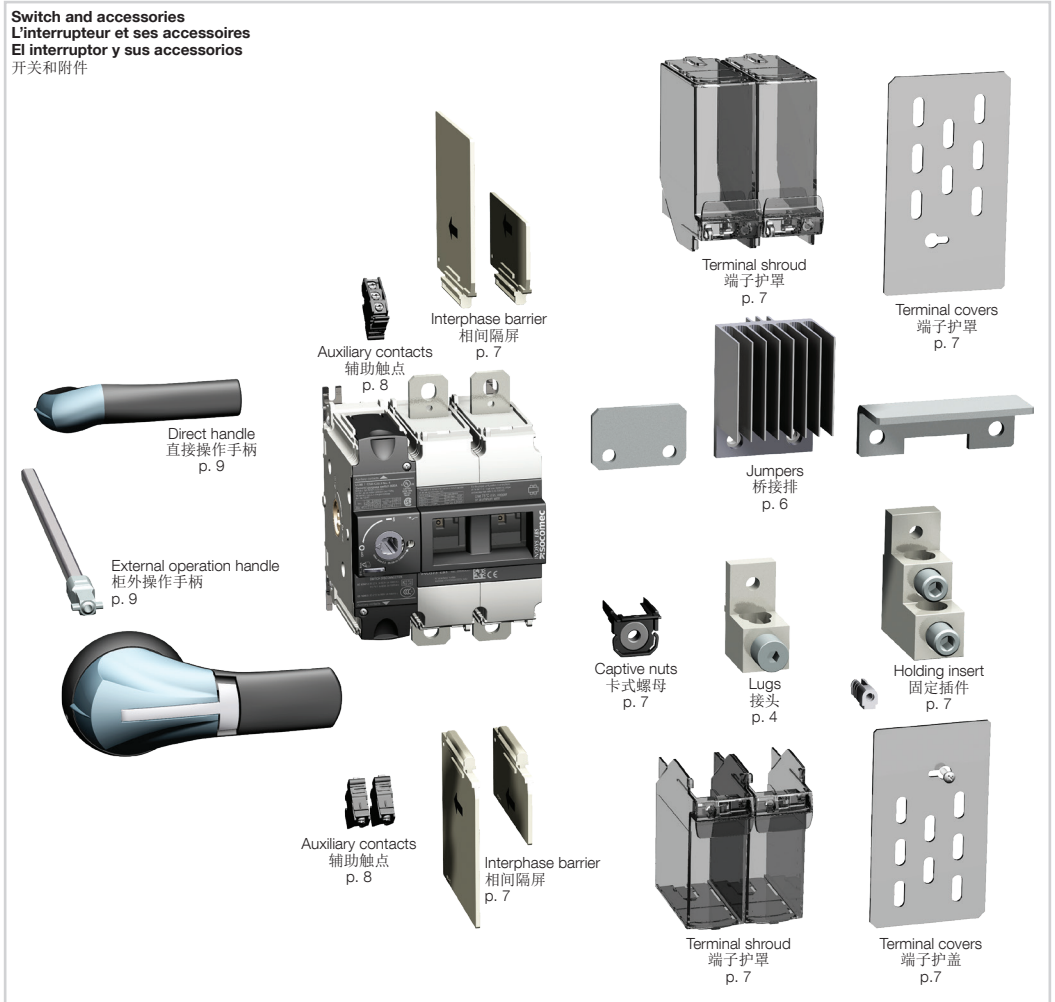
PV/DC开关 – 100至630 A

IEC: 86Pxxxxx / IEC & UL: 87Pxxxxx

Suitable for outdoor use

|   |     |  |  |  |  |  |
|---|-----|--|--|--|--|--|
| 1 | IEC | 160 A / 250 A / 315 A                  |  |  |  |  |
|   | UL  | 100 A / 200 A / 250 A                  |  |  |  |  |
| 2 | IEC | 400 A / 630 A                          |  |  |  |  |
|   | UL  | 275 A / 325 A / 400 A<br>500 A / 600 A |  |  |  |  |

**Switch and accessories**  
L'interrupteur et ses accessoires  
El interruptor y sus accesorios  
开关和附件



Keep the instruction sheet, it is necessary for the mounting of the accessories. Non contractual document.  
Ne jetez pas cette notice : elle sera nécessaire pour le montage des accessoires. Document non contractuel.  
No tirar este manual, porque es necesario para el montaje de los accesorios. Documento no contractual  
保存说明书, 以备安装附件时使用。非正式文件。

Dual dimensions  
Double dimensions  
Dimensiones duales  
双重单位制

in/mm  
in/mm  
in/mm  
in/mm

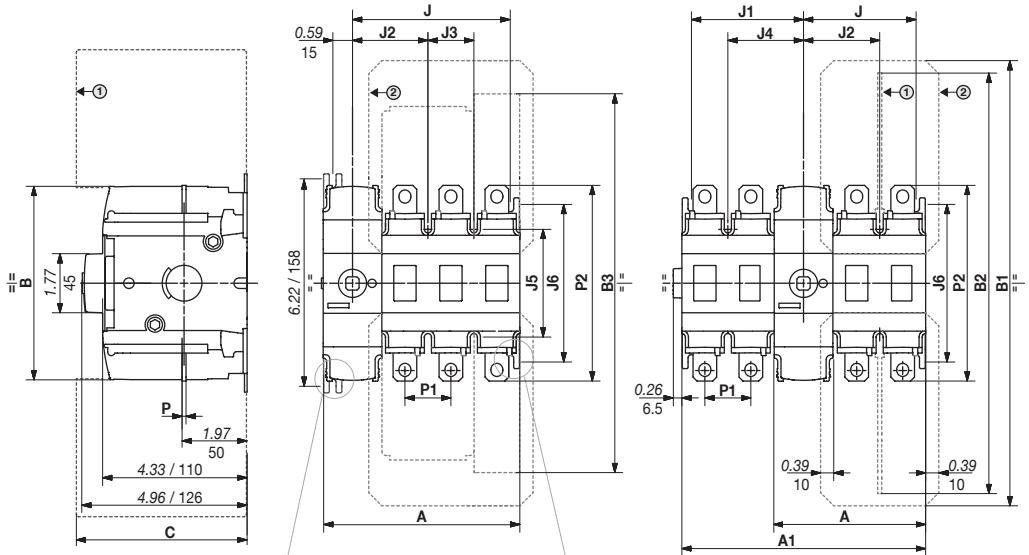
① Interphase barrier  
Ecrans entre phase  
Pantalla de separación entre pletinas  
相间隔屏

② Terminal screens  
Ecran de protection de plages  
Pantallas de protección  
端子护屏

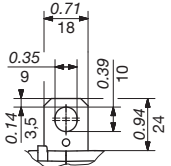
③ Terminal shroud  
Caches bornes  
Cubrebornes  
端子护罩

|   |    | A    |      |      |      | A1   |      | J     |       |      |       | J1   |       |
|---|----|------|------|------|------|------|------|-------|-------|------|-------|------|-------|
|   |    | 2P   | 3P   | 1+1P | 2+2P | 1+1P | 2+2P | 2P    | 3P    | 1+1P | 2+2P  | 1+1P | 2+2P  |
| ① | in | 4.60 | 5.98 | 3.23 | 4.60 | 4.60 | 7.36 | 3.35  | 4.72  | 1.97 | 3.37  | 2.05 | 3.44  |
|   | mm | 117  | 152  | 82   | 117  | 117  | 187  | 85.5  | 120.5 | 50.5 | 85.5  | 52.5 | 87.5  |
| ② | in | 5.40 | 7.17 | 3.62 | 5.40 | 5.40 | 8.94 | 4.13  | 5.93  | 2.36 | 4.15  | 2.44 | 4.23  |
|   | mm | 137  | 182  | 92   | 137  | 137  | 227  | 105.5 | 150.5 | 60.5 | 105.5 | 62.5 | 107.5 |

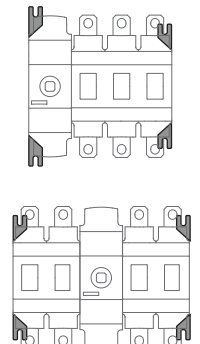
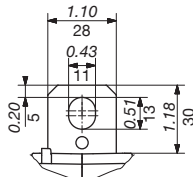
|   |    | B    | B1    | B2        |          |       | B3    | C    |      | J2   | J3   | J4   | J6   | J7   | J8   | P1   | P2   |
|---|----|------|-------|-----------|----------|-------|-------|------|------|------|------|------|------|------|------|------|------|
|   |    |      |       | IEC short | IEC long | UL    |       | IEC  | UL   |      |      |      |      |      |      |      |      |
| ① | in | 5.90 | 13.35 | 7.85      | 12.61    | 10.31 | 11.64 | 4.33 | 4.33 | 2.26 | 1.38 | 2.34 | 4.72 | 0.39 | 0.58 | 1.38 | 5.87 |
|   | mm | 154  | 339   | 199       | 320      | 262   | 296   | 110  | 110  | 57.5 | 35   | 59.5 | 120  | 10   | 15   | 35   | 149  |
| ② | in | 5.90 | 16.28 | 9.35      | 14.11    | 15.5  | 14.12 | 4.33 | 5.31 | 2.64 | 1.77 | 2.72 | 6.22 | 0.16 | 0.33 | 1.77 | 7.87 |
|   | mm | 154  | 414   | 237       | 358      | 394   | 359   | 110  | 135  | 67.5 | 45   | 69.5 | 158  | 4    | 8    | 45   | 200  |



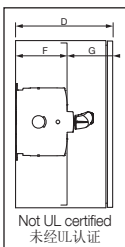
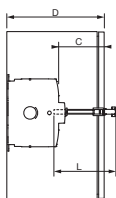
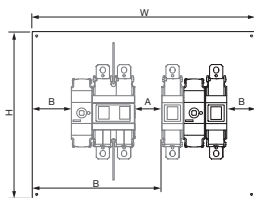
① F2 Terminals  
端子



② F3 Terminals  
端子



**Minimum enclosure dimensions UL98B, IEC / Dimensions minimum des coffrets UL98B, IEC**  
**Dimensiones mínimas de las cajas UL98B, IEC / 最小机壳尺寸UL98B, IEC**



Not UL certified  
未经UL认证

Minimum UL enclosure size / 最小机壳尺寸

|   |          | H 高 (in/mm)                  | W 宽 (in/mm)                 | D 深 (in/mm)                |
|---|----------|------------------------------|-----------------------------|----------------------------|
| ① | 2P       | 24/609                       | 16/406                      | 6/152                      |
|   | 3P       | 24/609                       | 16/406                      | 6/152                      |
|   | 2P       | 36/914                       | 24/609                      | 8/203                      |
| ② | 3P       | 48/1219                      | 36/914                      | 12/305                     |
|   | 4P       | 36/914<br>(48/1219 for 500A) | 24/609<br>(36/914 for 500A) | 8/203<br>(12/304 for 500A) |
|   | 2P 600A  | 60/1524                      | 36/914                      | 20/508                     |
|   | 4P 600 A | 60/1524                      | 36/914                      | 20/508                     |

External enclosure dimension.  
Dimension extérieure du coffret.  
Dimensiones externas de la caja.  
机壳外部尺寸

Clearance  
间距

|               | Each PV circuit up to 1500 VDC 2P |      |      |       | Each PV circuit up to 1000 VDC |      |
|---------------|-----------------------------------|------|------|-------|--------------------------------|------|
|               | ①                                 |      | ②    |       | ①                              |      |
|               | in                                | mm   | in   | mm    | in                             | mm   |
| <b>A min.</b> | 3.00                              | 76,2 | 3.00 | 76,2  | 2.00                           | 50,8 |
| <b>B min.</b> | 1.50                              | 38,1 | 1.50 | 38,1  | 1.00                           | 25,4 |
| <b>C min.</b> | 0.87                              | 22   | 1.08 | 27,5  | 0.87                           | 22   |
| <b>F min.</b> | 4.33                              | 110  | 5.47 | 137,5 | 4.33                           | 110  |
| <b>G min.</b> | 0                                 | 0    | 0,5  | 12,7  | 2,56                           | 65   |

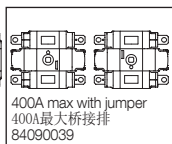
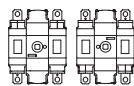
**Mounting / Montage / Montaje / 安装**



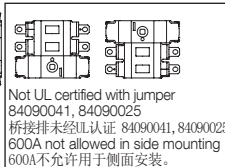
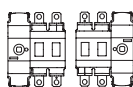
PZ 2  
22.12 lb.in / 2,5 Nm

**Mounting orientation / Sens de montage / Sentido de montaje / 安装方向**

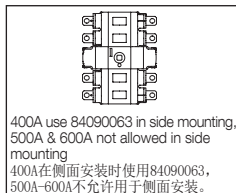
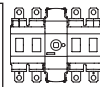
All mounting orientations are possible.  
Derating may apply - please consult us.  
可使用所有的安装方向。  
可能需要降容 - 请联系我们。



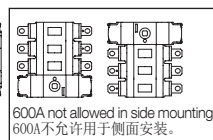
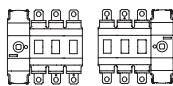
400A max with jumper  
400A最大桥接排  
84090039



Not UL certified with jumper  
84090041, 84090025  
桥接排未经UL认证 84090041, 84090025  
600A not allowed in side mounting  
600A不允许用于侧面安装。



400A use 84090063 in side mounting,  
500A & 600A not allowed in side mounting  
400A在侧面安装时使用84090063,  
500A-600A不允许用于侧面安装。

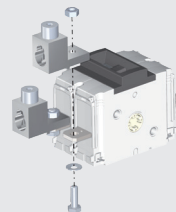


600A not allowed in side mounting  
600A不允许用于侧面安装。

**Connection with LUGS (UL application) & with cables or bars (IEC application)**  
**Raccordement avec bornes à cage (application UL) et câble ou barre recommandé (application CEI)**  
**Conexión con bornes (aplicación UL) y recomendada para cables y pletinas (aplicación IEC)**  
 LUGS连接 (UL应用) 以及电缆或铜排连接 (IEC应用)

| Electrical clearances minimum distances (in/mm)<br>电气间距最小距离 (in/mm) |                    |                            |
|---|--------------------|----------------------------|
|   | Phase/phase<br>相/相 | Phase/ground-earth<br>相/接地 |
| ①   | 1 / 25,4           | 1.38 / 35                  |
| ②   | 1 / 25,4           | 0.83 / 21                  |

without accessories  
不带附件



**Connection with LUGS (UL application) & with cables or bars (IEC application)**  
**Raccordement avec bornes à cage (application UL) et câble ou barre recommandé (application CEI)**  
**Conexión con bornes (aplicación UL) y recomendada para cables y pletinas (aplicación IEC)**  
 LUGS连接 (UL应用) 以及电缆或铜排连接 (IEC应用)

| Product Rating (A)<br>产品额定值 (A) | Designation<br>Designación<br>名称  | Ref. lugs (1)<br>Ref. bornes à cage (1)<br>Ref. bornes (1)<br>接头产品编号 (1) | Accessories (2)<br>Accesorios (2)<br>Accesorios (2)<br>附件 | Quantity per reference<br>Quantité par ref<br>Cantidad por referencia<br>每个产品编号包含的数量 | Openings per lug<br>Nombre de points de connexion<br>Numero de puntos de conexión<br>每个端子接头的开口 | Size Section<br>Sección (AWG)<br>尺寸 |              | Pressure screw torque<br>Couple de serrage vis de pression<br>Par de apriete tornillo de presión<br>压力螺钉力矩 |      |                   | Bolt torque<br>Couple de serrage boulon<br>Par de apriete tornillo<br>螺栓力矩 |     |            |      |      |      |
|---------------------------------|-----------------------------------|--|---|--|--|-------------------------------------|--------------|--|------|-------------------|--|-----|------------|------|------|------|
|                                 |                                   |  |   |  |  | min.<br>最小                          | max.<br>最大   | lb.in  | Nm   | Size<br>尺寸        | lb.in  | Nm  | Size<br>尺寸 | in   | mm   |      |
| ① 100 - 250                     | <br>IHI 252-0-TP-STK-34-49-HEX    | 39542023 (2)   | -   | 2  | 2  | Cu:14,<br>Al:12                     | 10           | 35   | 4    | 4,5<br>5,1<br>5,6 | 3/16   | 160 | 18         | 13   | 1,29 | 32,5 |
|                                 |                                   | 39543023 (2)   | -   | 3  |  |                                     |              |  |      |                   |  |     |            |      |      |      |
|                                 |                                   | 39544023 (2)   | -   | 4  |  |                                     |              |  |      |                   |  |     |            |      |      |      |
| ② 275 - 325                     | <br>CMC LA-630R                   | 39542040 (2)   | -   | 2  | 1  | 4                                   | 600<br>KCMIL | 550  | 62,1 | 1/2               | 310  | 35  | 15         | 1,79 | 45,7 |      |
|                                 |                                   | 39543040 (2)   | -   | 3  | 2  |                                     |              |  |      |                   |  |     |            |      |      |      |
|                                 |                                   | 39544040 (2)   | -   | 4  | 2  |                                     |              |  |      |                   |  |     |            |      |      |      |
| ② 275 - 500                     | <br>CMC PV2-600                   | 39542060 (2)   | -   | 2  | 2  | 600<br>KCMIL                        | 375          | 42,4   | 3/8  | 310               | 35   | 15  | 2,74       | 69,7 |      |      |
|                                 |                                   | 39543060 (2)   | -   | 3  |  |                                     |              |  |      |                   |  |     |            |      |      |      |
|                                 |                                   | 39544060 (2)   | -   | 4  |  |                                     |              |  |      |                   |  |     |            |      |      |      |
| 600 (4)                         | <br>Lugs holder & BRUMALL BS350TP | 39542015   | 39540039<br>(up to 3 lugs) (3)                            | 2  | 2  | 6                                   | 350<br>KCMIL | 375  | 42,4 | 3/8               | 310  | 35  | 15         | 2,87 | 72,8 |      |
|                                 |                                   | 39543015   |   | 3  |  |                                     |              |  |      |                   |  |     |            |      |      |      |



(1) Interphase barriers must be installed on the products ① or ②.  
 Les écrans entre phase doivent être installés sur les produits ① ou ②.  
 必须在产品上安装相间隔屏 ① 或 ②。

(2) Captive nut 84996xxx is mandatory / Ecrou captif 84996xxx est obligatoire / 卡式螺母84996xxx是强制性的

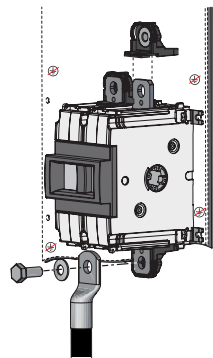
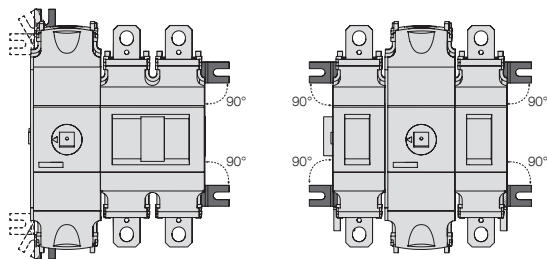
(3) Accessory is mandatory to mount the lugs on the product terminal / Accessoire obligatoire pour monter le lugs sur les bornes de produit.  
 必须使用附件将凸耳安装在产品终端上。

(4) Interphase barriers must be installed also between mechanical and switching unit for 600A rating / Les écrans entrephase doivent être également installés entre la commande et le pôle de coupure pour le calibre 600A / 在機械和開關單元之間也必須安裝相间勢壘，以獲得600A的額定值。

**Recommended connection with cables or bars (IEC application) / Raccordement câble ou barre recommandé (application CEI)  
Conexión recomendada para cables y pletinas (aplicación IEC) / 建议的电缆或铜排连接 (IEC应用)**

| le | Nominal Cu cable section<br>Section nominale câbles rigides Cu<br>Sección máx. de cables de cobre rígidos<br>额定铜电缆横截面 | Nominal Al cable section<br>Section nominale câbles rigides Al<br>Sección máx. de cables de Alu. rígidos<br>额定铝电缆横截面 | Maximum busbar width<br>Largo máx. barra<br>最大铜排宽度           |   | Tightening torque<br>Couple de serrage<br>Par de apriete<br>拧紧力矩 | Size |    |
|----|---|--|--|---|--|------|----|
|    |   |  | Non isolated bars<br>非隔离铜排                                   | Isolated bars with interphase barrier<br>带相间隔屏的隔离铜排 |  | ●    | 13 |
| ①  | 160 A (1)   | 70 mm <sup>2</sup>   | 120 mm <sup>2</sup>  |   | ≤ 20 mm  |      |    |
|    | 250 A (1)   | 120 mm <sup>2</sup>  | 185 mm <sup>2</sup>  |   |  |      |    |
|    | 315 A (1)   | 185 mm <sup>2</sup><br>(to use with reduced cable lug)<br>与缩短电缆接头一起使用)   | on consultation / sur consultation /<br>en la consulta / 在咨询 |   |  |      |    |

- (1) Long interphase barriers 8499221X must be installed on the products ①.  
(1) Les écrans entre phase longs 8499221X doivent être installés sur les produits ①.  
(1) 必须在产品上安装相间隔屏 ①。



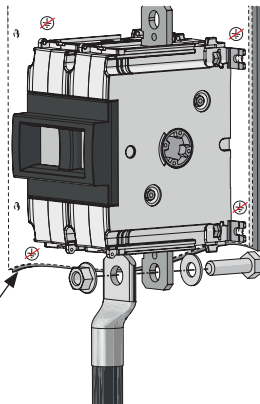
**!** For all F2 2P IEC 1500Vdc applications, product must be mounted according one of following configuration:  
Case 1: on an insulated mounting plate  
Case 2: products pads must be oriented at 90° and captive nuts (8499612X) must be used and connection shall be realized from front

对于所有F2 2P IEC 1500Vdc应用, 必须按照以下配置之一安装产品:  
情况1: 在绝缘的安装板上  
情况2: 产品焊盘必须定向为90°, 并且必须使用固定螺母(8499612X), 并且应从正面进行连接。



| le | Nominal Cu cable section<br>Section nominale câbles rigides Cu<br>Sección máx. de cables de cobre rígidos<br>额定铜电缆横截面 | Nominal Al cable section<br>Section nominale câbles rigides Al<br>Sección máx. de cables de Alu. rígidos<br>额定铝电缆横截面 | Maximum busbar width<br>Largo máx. barra<br>最大铜排宽度 |   | Tightening torque<br>Couple de serrage<br>Par de apriete<br>拧紧力矩 | Size |         |
|----|---|--|--|---|--|------|---------|
|    |   |  | Non isolated bars<br>非隔离铜排                         | Isolated bars with interphase barrier<br>带相间隔屏的隔离铜排 |  | ●    | 15 - 17 |
| ②  | 400 A (1)   | 240 mm <sup>2</sup>  | 2 x 150 mm <sup>2</sup>                            |   | ≤ 25 mm  |      |         |
|    | 630 A (1)   | 2 x 185 mm <sup>2</sup>  | 2 x 300 mm <sup>2</sup>                            |   |  |      |         |

- (1) Long interphase barriers 8499221X must be installed on the products ②.  
(1) Les écrans entre phase longs 8499221X doivent être installés sur les produits ②.  
(1) 必须在产品上安装相间隔屏 ②。



|      | H 高 (in/mm) | W 宽 (in/mm) |
|------|-------------|-------------|
| 1+1P | 14.17/360   | 6.97/177    |
| 2P   | 14.17/360   | 6.24/158.5  |
| 2+2P | 14.17/360   | 10.51/267   |

**!** For 1500Vdc 630A PV2 applications in enclosure, with either floating or grounded metallic back plate, a H x W isolation plate must be mounted between the product and back plate. Products pads must also be oriented at 90°.

对于外壳中的1500Vdc 630A PV2应用, 带浮动或接地金属背板, 必须在产品和背板之间安装H x W隔离板。产品垫也必须定向在90°。



Mounting of jumpers - Montage des barres de pontage - Montaje de las pletinas de unión - 安装桥接排

Fig./图 A



84090016  
L = 0.35in / 9mm  
84090040  
L = 1.38in / 35mm

one jumper only  
for 100A UL  
一个跳线, 仅适用  
于100A UL

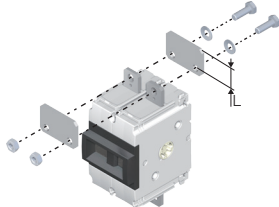


Fig./图 B



84090024  
L = 1.61in / 41mm  
84090039  
L = 1.02in / 26mm

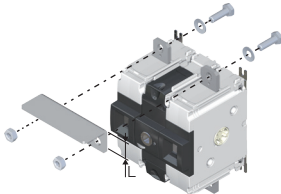
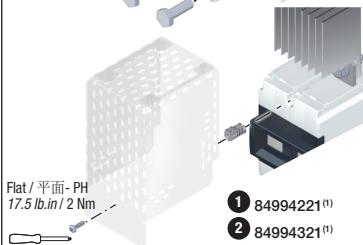


Fig./图 C



84090025  
L = 1.26in / 32mm  
84090031  
L = 2.04in / 52mm  
84090063  
L = 3.38in / 86mm  
84090041 (2P only)  
L = 2.44in / 62mm



- 1 84994221<sup>(1)</sup>
- 2 84994321<sup>(1)</sup>

Grounded Network / 接地网络

|      |   | 1 PV circuit<br>Up to 1500 VDC 2P/3P<br>1个PV回路<br>可达1500 VDC 2P/3P |  | 2 PV circuit<br>Up to 1500 VDC 2P<br>2个PV回路<br>可达1500 VDC 2P |      | Tightening torque<br>Couple de serrage<br>Par de apriete<br>拧紧力矩 | Size |                       |  |       |   |   |   |
|------|---|--|--|--|------|--|------|-----------------------|--|-------|---|---|---|
|      |   | Ref.   | Fig.   | Ref.   | Fig. |  |      |                       |  |       |   |   |   |
|      | 1 | UL   | 100A / 200A  | 84090016   | A    | -  | -    | 159.31 lb.in<br>18 Nm |  | 13    |   |   |   |
|      |   |  | 250A   | 84090016 <sup>(1)</sup>                                      | A    |  |      |                       |  |       |   |   |   |
|      |   |  | 84090025 <sup>(2)</sup><br>84090031 <sup>(2)</sup> | B  |      |  |      |                       |  |       |   |   |   |
|      | 2 | UL   | 275A   | 84090040   | A    | -  | -    | 309.77 lb.in<br>35 Nm |  | 15-17 |   |   |   |
|      |   |  | 325A   |  |      |  |      |                       |  |       |   |   |   |
|      |   |  | 400A   |  |      |  |      |                       |  |       |   |   |   |
| 500A |   |  | 84090041<br>84090063                               |  |      |  |      |                       |  |       | C | - | - |
| 600A |   |  | 84090063   |  |      |  |      |                       |  |       |   |   |   |
|      | 1 | UL   | 100A / 200A  | 84090024   | B    | -  | -    | 159.31 lb.in<br>18 Nm |  | 13    |   |   |   |
|      |   |  | 250A   |  |      |  |      |                       |  |       |   |   |   |
|      | 2 | UL   | 275A   | 84090039   | B    | -  | -    | 309.77 lb.in<br>35 Nm |  | 15-17 |   |   |   |
|      |   |  | 325A   |  |      |  |      |                       |  |       |   |   |   |
|      |   |  | 400A   |  |      |  |      |                       |  |       |   |   |   |
|      |   |  | 500A   |  |      |  |      |                       |  |       |   |   |   |
|      | 2 | UL   | 400A   | -  | -    | 84090041<br>84090063   | C    | 309.77 lb.in<br>35 Nm |  | 15-17 |   |   |   |
|      |   |  | 500A / 600A  | -  | -    | 84090063   |      |                       |  |       |   |   |   |

<sup>(1)</sup>For 2P. <sup>(2)</sup>For 3P, vertical mounting orientation. <sup>(3)</sup>For 3P, horizontal mounting orientation. <sup>(1)</sup>对于2P. <sup>(2)</sup>对于3P, 垂直安装方向. <sup>(3)</sup>对于3P, 水平安装方向.

Pole connection in series - Configuration raccordement - Conexión de los polos en serie

1 PV circuit - up to 1500 VDC / 2 PV circuit - up to 1500 VDC

串联极  
1个PV回路 - 可达1500 VDC / 2个PV回路 - 可达1500 VDC

Grounded systems: in some installation standards, this configuration might not be allowed.

For ungrounded systems, see NEC 690.35 (NEC2008, NEC2011, NEC2014, NFPA70).

For multiple polarity switching (ungrounded systems or multiple circuit switching), interphase barrier must be installed before energizing.

接地系统: 在一些安装标准中, 可能不允许此配置。

对于未接地的系统, 请参阅NEC 690.35 (NEC2008, NEC2011, NEC2014, NFPA70)。

对于多极开关 (未接地系统或多回路开关), 必须在通电前安装相间隔离屏。

Grounded network  
接地网络

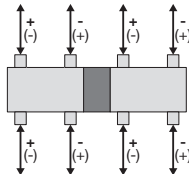
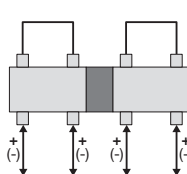
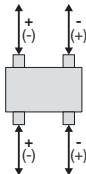
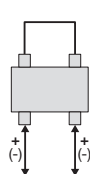
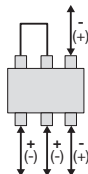
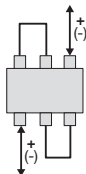
Floating network  
浮动网络

Grounded network<sup>(1)</sup>  
接地网络

Floating network  
浮动网络

Grounded network  
接地网络

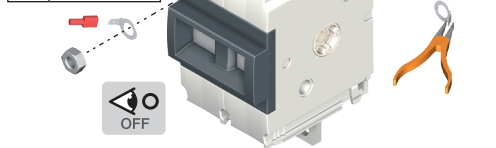
Floating network  
浮动网络



(1) 600A 1+1P UL not authorized / 600A 1 + 1P UL未授权

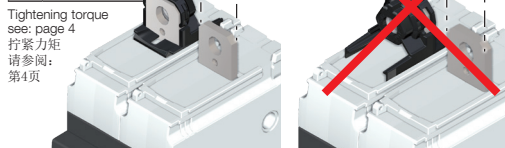
**Voltage taps**  
**Cosse prise tension**  
**Kit de toma de tensión**  
 电压分接头

| Ref./ 产品编号     |
|----------------|
| 1 84999012 (1) |
| 2 84999013 (1) |



**Mounting of captive nuts**  
**Montage écrou captif**  
**Montaje de las tuercas cautivas**  
 安装卡式螺母

| Ref./ 产品编号 |
|------------|
| 1 8499612x |
| 2 8499613x |

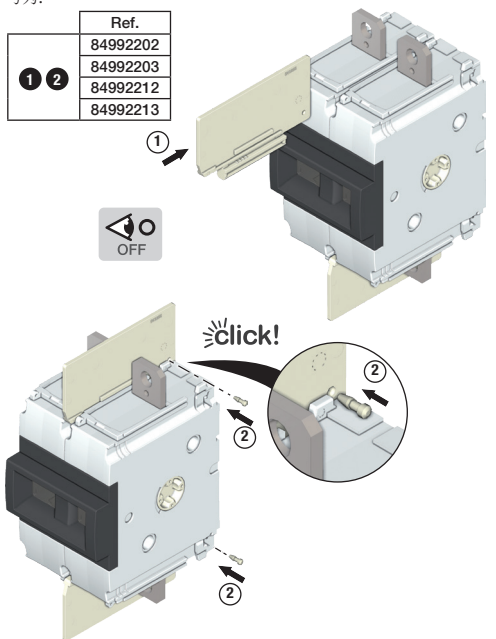


Tightening torque  
 see: page 4  
 拧紧力矩  
 请参阅:  
 第4页

**Interphase barrier mounting**  
**Montage des écrans entre phase**  
**Montaje de pantalla de separación entre pletinas**  
 安装相间隔屏

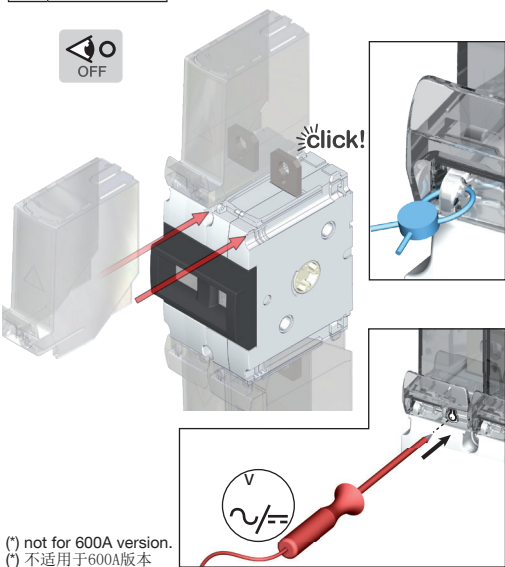
For products not delivered with interphase barriers, the reference are:  
 对于未提供相间隔屏的产品, 产品编号为:

| Ref.         |
|--------------|
| 1 84992202   |
| 1 2 84992203 |
| 84992212     |
| 84992213     |



**Terminal shroud mounting**  
**Montage des caches bornes**  
**Montaje cubrebornes**  
 安装端子护罩

| Ref./ 产品编号  |
|-------------|
| 1 849942x3  |
| 849942x4    |
| 2 849943x3* |
| 849943x4*   |

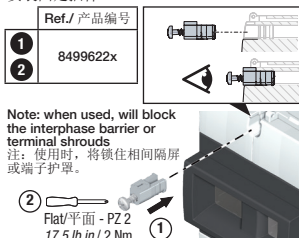


(\*) not for 600A version.  
 (\*) 不适用于600A版本

**Mounting of holding insert**  
**Montage chevilles**  
**Montaje de las clavijas**  
 安装固定插件

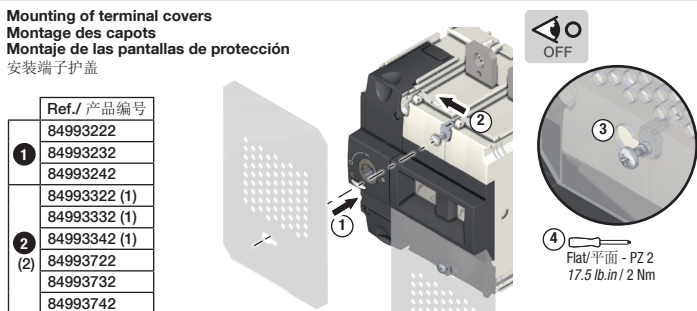
| Ref./ 产品编号 |
|------------|
| 1 8499622x |
| 2          |

Note: when used, will block the interphase barrier or terminal shrouds  
 注: 使用时, 将锁住相间隔屏或端子护罩。



**Mounting of terminal covers**  
**Montage des capots**  
**Montaje de las pantallas de protección**  
 安装端子护盖

| Ref./ 产品编号     |
|----------------|
| 1 84993222     |
| 84993232       |
| 84993242       |
| 84993322 (1)   |
| 84993332 (1)   |
| 2 84993342 (1) |
| (2) 84993722   |
| 84993732       |
| 84993742       |

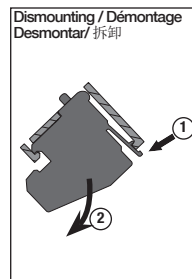
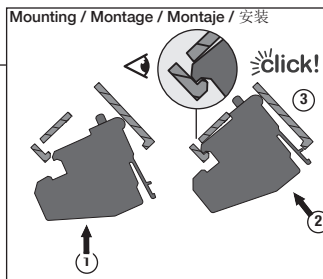
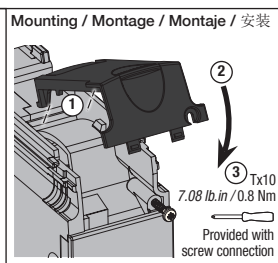
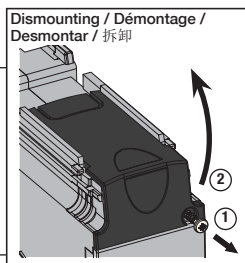
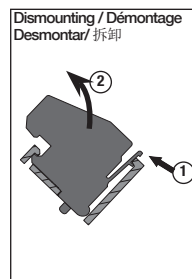
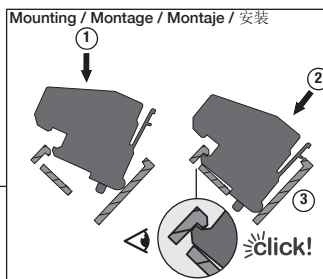
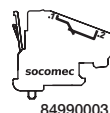
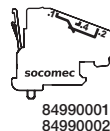
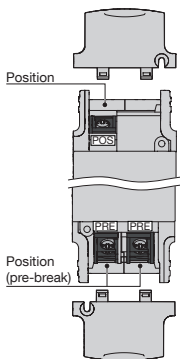


**Mounting of auxiliary contacts**  
**Montage des contacts auxiliaires**  
**Montaje de los contactos auxiliares**  
 安装辅助触点

|    |   |
|----|---|
| Cu | 75° C min / 最小75° C   |
|    | AWG<br>min 1x 20 / 2x 16<br>AWG max 1x 14 / 2x 14<br>min 1x 0,5 mm <sup>2</sup> / 2x 1,5 mm <sup>2</sup><br>max 1x 2,5 mm <sup>2</sup> / 2x 2,5 mm <sup>2</sup> |
|    | 0.31 in / 8mm   |
|    | Flat 5°/平面5° - PZ 2 - 7.08 lb.in / 0.8 Nm   |

| Ref.<br>产品编号 | Type<br>类型      | Min.<br>current (A)<br>最小电流 (A) | I <sub>th</sub> (A) | Operating Current I <sub>e</sub> (A) / 工作电流 I <sub>e</sub> (A) |                 |                  |                  |                  |
|--------------|-----------------|---------------------------------|---------------------|--|-----------------|------------------|------------------|------------------|
|              |                 |                                 |                     | 24 VDC<br>DC-14  | 48 VDC<br>DC-14 | 230 VDC<br>AC-15 | 440 VDC<br>AC-15 | 690 VDC<br>AC-15 |
| 84990001     | NO/NC standard  | 12.5 mA / 24 V                  | 10                  | 1  | 0.2             | 4                | 4                | -                |
| 84990002     | NO/NC low level | 1 mA / 4 V                      | 10                  | 1  | 0.2             | 2                | 1                | -                |
| 84990003     | NC 600V         | 10 mA / 24 V                    | 10                  | 1  | 0.2             | 4                | 4                | 0.5              |

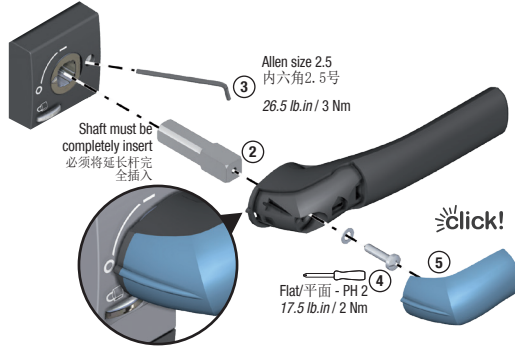
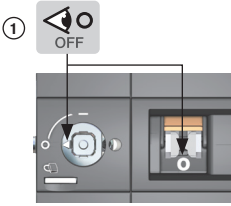
Line terminals of the two auxiliary contacts placed side by side must be of the same polarity. Surrounding temperature max: 75 °C (UL only)  
 Les raccordements entre deux contacts auxiliaires côte à côte doivent être de la même polarité. Température de proximité max: 75 °C (UL seulement)  
 Conexiones de entrada de los contactos auxiliares adyacentes deben ser de la misma polaridad. Temperatura cerca max: 75 °C (sólo UL)  
 并排放置的两个辅助触点的线路端子必须是相同的极性。最大周围温度：75 °C（仅UL）。



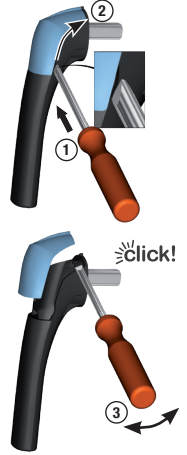


**Direct handle mounting**  
**Montage poignée direct**  
**Montaje mando directo**  
 安装直接操作手柄

| Ref./ 产品编号     |
|----------------|
| ① 849950x2 (1) |
| ② 849950x3 (1) |

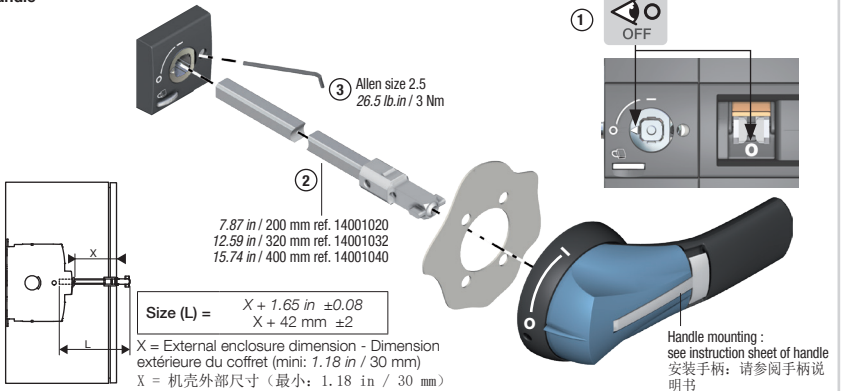


**Cover dismantling**  
**Démontage du capot**  
**Desmontar la cubierta**  
 拆除护盖



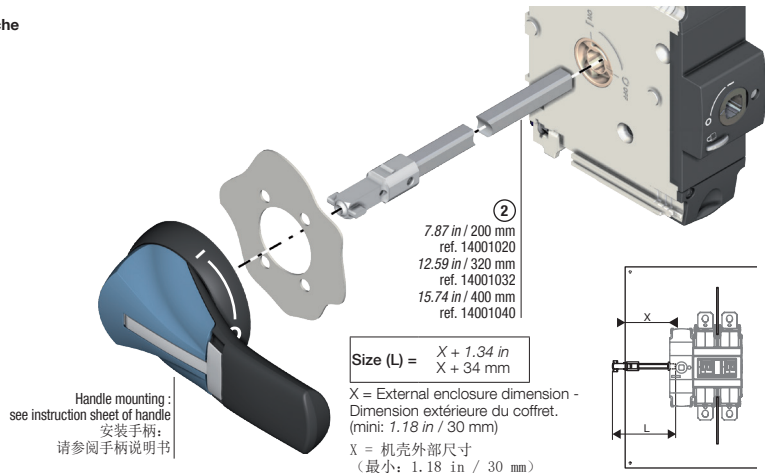
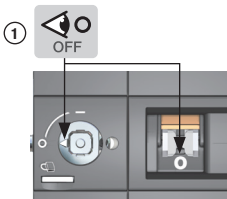
**External front operation handle**  
**Commande frontale**  
**Mando frontal**  
 正面柜外操作手柄

| Ref./ 产品编号     |
|----------------|
| 74212111 (1)   |
| 14A12111 (1)   |
| 742G2111 (2)   |
| 14AG2111       |
| 742F2111 (2)   |
| 14AF2111       |
| ① 742D2111 (2) |
| ② 14AD2111     |
| 742E2111 (2)   |
| 14AE2111       |
| 742D2911 (2)   |
| 14AD2911 (2)   |
| 742E2911 (2)   |
| 14AE2911 (2)   |



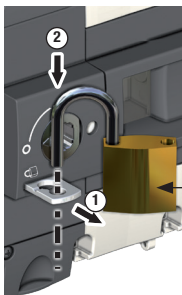
**External Left Side operation**  
**Commande latéral extérieure gauche**  
**Mando lateral exterior izquierdo**  
 柜外左侧操作

| Ref./ 产品编号 |
|------------|
| ① 14YA2111 |
| ② 142J6111 |
| 14AA2111   |
| 14AJ2111   |
| 14YB2111   |
| 142K6111   |
| 14AB2111   |

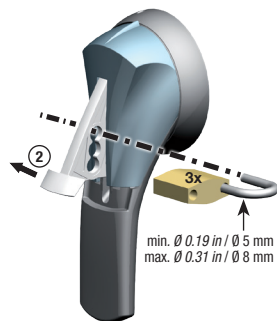


(1) Not UL certified / 未经UL认证  
 (2) Not for double circuit / 不适用于双回路

**Padlocking on handle or product**  
**Cadenassage sur produit ou poignée**  
**Enclavamiento sobre el producto o sobre el mando**  
将挂锁安装在手柄或产品上

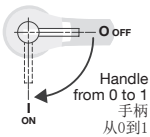
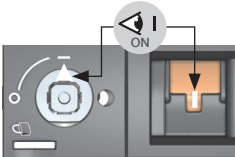
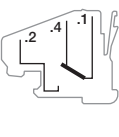
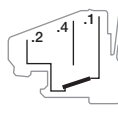
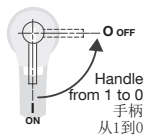
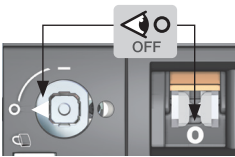
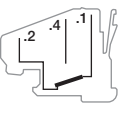
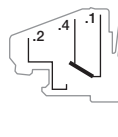


min: 1x  $\emptyset$  0.12 in /  $\emptyset$  3 mm  
max: 2x  $\emptyset$  0.24 in /  $\emptyset$  6 mm  
1x  $\emptyset$  0.28 in /  $\emptyset$  7 mm  
& 1x  $\emptyset$  0.24 in /  $\emptyset$  6 mm



min.  $\emptyset$  0.19 in /  $\emptyset$  5 mm  
max.  $\emptyset$  0.31 in /  $\emptyset$  8 mm

**Verification of the product and its installation before power ON**  
**Vérification du produit et de son installation avant mise en service**  
**Verificación del producto y de su instalación antes de la puesta en marcha**  
 接通电源前，验证产品及其安装。

| Action to be performed<br>Action à effectuer<br>Acción a realizar<br>需执行的操作   | Final state of the product<br>Etat final du produit<br>Estado final del producto<br>产品的最终状态 | State auxiliary contact / 辅助触点状态  |   | Padlock feature on the product<br>产品上的挂锁功能 |
|---|---|---|---|--|
|   |   | PRE (Pre-break)<br>PRE<br>(预断开)   | POS (contact ON position)<br>POS<br>(触点打开位置)                                      |  |
|  <p>Handle from 0 to 1<br/>手柄从0到1</p> |            |  |  | NO<br>不能                                   |
|  <p>Handle from 1 to 0<br/>手柄从1到0</p> |            |  |  | Possible<br>可以                             |

**1) Periodic check**

During installation operation or after a long period of shutdown, maintenance is recommended and consist in mechanical as described above (recommended frequency for maintenance: 1 times per year).

1) 定期检查

执行安装操作过程中或长时间关机后，建议进行维护并包括上述机械（建议维护频率：每年1次）。

**1) Vérification périodique**

En cours d'exploitation et selon les règles en vigueur ou après un arrêt prolongé ou un défaut, il est recommandé de faire les vérifications ci-dessus (recommandé 1 fois par an).

**1) Verificación periódica**

Cuando el producto está funcionando y según las reglas vigentes o después de un paro prolongado o de un defecto, se recomienda realizar las verificaciones mencionadas más arriba (1 vez cada año).

